

EPSON[®] Professional Media Guide

Spring 2012 | BE INSPIRED.



EPSON[®]
EXCEED YOUR VISION

Epson America, Inc.
P.O. Box 93012
Long Beach, CA 90809
proimaging.epson.com

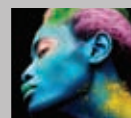
Specifications, prices and availability of items are subject to change without notice. Prices are estimated street prices.

EPSON, EPSON Stylus and Signature Worthy are registered trademarks, and EPSON Exceed Your Vision is a registered logomark of Seiko Epson Corporation. UltraSmooth is a registered trademark, and CrystalClear and DisplayTrans are trademarks of Epson America, Inc. All other product and brand names are trademarks and/or registered trademarks of their respective companies. Epson disclaims any and all rights in these marks. Copyright 2011 Epson America, Inc. 100K



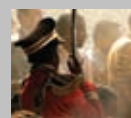
EPSON Professional Media At-a-glance

Professional media compatibility chart for all current EPSON Stylus® Pro professional printers. **2–3**



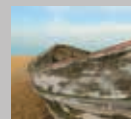
Signature Worthy®

Designed for creative professionals, Signature Worthy papers deliver the finest in quality and performance. **4**



Photographic Media

Premium, resin-coated, photographic papers for unmatched print quality and the look and feel of exhibition photographs. **5–9**



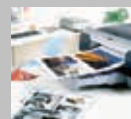
Coated Media: Matte

Papers in a variety of weights for presentation and display applications that require photographic image quality with a matte finish. **10–13**



Fine Art Media

Acid-free, archival, cotton papers and canvas for fine art originals and reproductions with a true museum-quality appearance and longevity. **14–20**



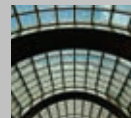
Proofing Media

Specially coated proofing papers that deliver the highest degree of image quality, color stability and color accuracy for general, imposition and contract proofing. **21–25**



Signage Media

Highly durable and versatile media designed to meet the extreme requirements of advertising, banner and point-of-purchase display applications. **26**



Guidelines for Choosing Media

Choosing the correct media for the application, based upon paper specifications. **27–28**



Why Epson?

For the best image quality, color accuracy and longevity, always choose EPSON Professional Media.

EPSON Professional Media is optimized with EPSON print drivers, ink and print heads to deliver exceptional, consistent output — day after day, year after year. Only EPSON media has been rigorously tested to provide the quality, color accuracy and durability that have made the EPSON name synonymous with excellence in digital printing.

Plus, all our media is designed to be quick-drying for easy handling. Colors are stable right out of the printer, so there's no short-term color shifting. And, everything you print will have professional-level lightfastness ratings.

Exceptional output, for every application.

When used with EPSON ink, EPSON Professional Media delivers truly spectacular output that dramatically raises the bar for inkjet printing. Photographers can produce dazzling archival color, as well as neutral or toned black-and-white prints. Graphic artists can see accurate color in the earliest design stages and give clients proofs they can actually match on press. And, prepress professionals can produce contract-quality proofs that adhere to both SWOP® and GRACoL® standards.

More options for greater flexibility and creativity.

We offer a wide range of specialty media for every printing need — from high-end photo and professional proofing papers to museum-quality canvas and durable indoor signage media. You'll find them all inside this handy guide.



Number	Page	Cut Sheet	Paper Roll	EPSON Stylus Pro 3880 Accepts cut sheets from 4" x 6" to 17" x 22"	EPSON Stylus Pro 4900 Accepts rolls 17" or smaller and cut sheets from 8.5" x 11" to 17" x 22"	EPSON Stylus Pro 7700 Accepts rolls 24" or smaller and cut sheets from 8.5" x 11" to 24" x 30"	EPSON Stylus Pro 7890 Accepts rolls 24" or smaller and cut sheets from 8.5" x 11" to 24" x 30"	EPSON Stylus Pro 7900 Accepts rolls 24" or smaller and cut sheets from 8.5" x 11" to 24" x 30"	EPSON Stylus Pro 9700 Accepts rolls 44" or smaller and cut sheets from 8.5" x 11" to 36" x 44"	EPSON Stylus Pro 9890 Accepts rolls 44" or smaller and cut sheets from 8.5" x 11" to 36" x 44"	EPSON Stylus Pro 9900 Accepts rolls 44" or smaller and cut sheets from 8.5" x 11" to 36" x 44"	EPSON Stylus Pro 11880 Accepts rolls 64" or smaller and cut sheets from 8.5" x 11" to 36" x 44"	EPSON GS 6000 Accepts rolls 64" or smaller; Solvent ink
Photographic Media													
Premium Luster Photo Paper (260)	5		■		■	■	■	■	■	■	■	■	
Ultra Premium Photo Paper Luster	5	■		■	■	■	■	■	■	■	■	■	
Exhibition Fiber Paper	6	■	■	■	■	■	■	■	■	■	■	■	
Premium Semigloss Photo Paper (170)	7		■	■	■	■	■	■	■	■	■	■	
Premium Photo Paper Semigloss	7	■		■	■	■	■	■	■	■	■	■	
Premium Glossy Photo Paper (250)	8		■	■	■	■	■	■	■	■	■	■	
Premium Glossy Photo Paper (170)	8	■		■	■	■	■	■	■	■	■	■	
Premium Photo Paper Glossy	8	■		■	■	■	■	■	■	■	■	■	
Premium Semimatte Photo Paper (260)	9		■	■	■	■	■	■	■	■	■	■	
Coated Media: Matte													
Enhanced Matte Paper	10		■	■	■	■	■	■	■	■	■	■	
Ultra Premium Presentation Paper Matte	10	■		■	■	■	■	■	■	■	■	■	
Enhanced Matte Posterboard	11	■		■	■	■	■	■	■	■	■	■	
Doubleweight Matte Paper	12		■	■	■	■	■	■	■	■	■	■	
Presentation Matte Paper	12	■		■	■	■	■	■	■	■	■	■	
Singleweight Matte Paper	12	■		■	■	■	■	■	■	■	■	■	
Presentation Paper Matte	13	■		■	■	■	■	■	■	■	■	■	
Enhanced Adhesive Synthetic Paper	13		■	■	■	■	■	■	■	■	■	■	
Fine Art Media													
Hot Press Bright	14	■	■	■	■	■	■	■	■	■	■	■	
Hot Press Natural	14	■	■	■	■	■	■	■	■	■	■	■	
Cold Press Bright	15	■	■	■	■	■	■	■	■	■	■	■	
Cold Press Natural	15	■	■	■	■	■	■	■	■	■	■	■	
Watercolor Paper Radiant White	15	■		■	■	■	■	■	■	■	■	■	
UltraSmooth® Fine Art Paper 250 gsm	16		■	■	■	■	■	■	■	■	■	■	
UltraSmooth® Fine Art Paper 325 gsm	16	■		■	■	■	■	■	■	■	■	■	
UltraSmooth Fine Art Paper 500 gsm	16	■		■	■	■	■	■	■	■	■	■	
Velvet Fine Art Paper	18	■		■	■	■	■	■	■	■	■	■	
Somerset® Velvet for Epson 255 gsm	18		■	■	■	■	■	■	■	■	■	■	
Somerset Velvet for Epson 505 gsm	18	■		■	■	■	■	■	■	■	■	■	
Exhibition Canvas Satin	19		■	■	■	■	■	■	■	■	■	■	
Exhibition Canvas Matte	19	■		■	■	■	■	■	■	■	■	■	
Exhibition Canvas Gloss	19		■	■	■	■	■	■	■	■	■	■	
GS Canvas Gloss (Solvent)	20		■	■	■	■	■	■	■	■	■	■	■
GS Canvas Satin (Solvent)	20		■	■	■	■	■	■	■	■	■	■	■
Proofing Media													
Standard Proofing Paper (205)	21		■	■	■	■	■	■	■	■	■	■	
Standard Proofing Paper (240)	21	■		■	■	■	■	■	■	■	■	■	
Standard Proofing Paper SWOP3	22	■		■	■	■	■	■	■	■	■	■	
Standard Proofing Paper Production	22	■		■	■	■	■	■	■	■	■	■	
Proofing Paper White Semimatte	22	■		■	■	■	■	■	■	■	■	■	
Proofing Paper Commercial	23		■	■	■	■	■	■	■	■	■	■	
Proofing Paper Publication	23		■	■	■	■	■	■	■	■	■	■	
Standard Proofing Paper Adhesive	23	■		■	■	■	■	■	■	■	■	■	
CrystalClear™ Film	24		■	■	■	■	■	■	■	■	■	■	
CrystalClear Film Adhesive	24	■		■	■	■	■	■	■	■	■	■	
Carolina Cover C1S 18 Point	25	■		■	■	■	■	■	■	■	■	■	
Tango Blanks C1S 18 Point	25	■		■	■	■	■	■	■	■	■	■	
Signage Media													
DisplayTrans™ Backlight Media	26		■	■	■	■	■	■	■	■	■	■	
GS DisplayTrans Backlight Media (Solvent)	26		■	■	■	■	■	■	■	■	■	■	■
GS Poster Paper Gloss (Solvent)	26		■	■	■	■	■	■	■	■	■	■	■

The Signature Worthy Collection

Signature Worthy papers are designed in collaboration with the world's leading Creative Professionals.

Only the highest quality EPSON papers receive this designation, which represents the finest in color fidelity, the smoothest tonal transitions, exceptional black density and longevity. Each paper has been developed and tested at the highest levels to work in concert with Epson's industry-leading professional printers and inks. The most demanding Creative Professionals use Signature Worthy paper because their reputations are on the line with every print.



Media in this guide that are distinguished by the Signature Worthy logo represent the finest quality papers we have to offer.

Select professionals trust Epson's Signature Worthy papers for their final signature. We hope you find it worthy of yours.



EPSON photographic papers are designed to deliver the best in photographic image quality and longevity when used with EPSON ink. They feature a resin coating, along with a special ink-receptor layer that absorbs ink quickly, so prints dry faster and color is stable, right out of the printer. Plus, when used with EPSON ink, select EPSON photo papers produce durable prints with lightfastness ratings of more than 100 years.*

Luster/Semigloss

Premium Luster Photo Paper (260)



Epson's most popular paper amongst photographers, both professionals and advanced amateurs alike. Traditional-E surface with a vibrant color gamut.

Uses:

Exceptional-quality color and black-and-white portraits and prints

Specs:

- Luster Finish
- 10 mil Thickness
- 97% Opacity
- 97 ISO Brightness

Paper Size	Rolls	Product #	Price
10" x 100'	1 roll	S042077	\$ 60.00
16" x 100'	1 roll	S042079	99.95
20" x 100'	1 roll	S042080	120.00
24" x 100'	1 roll	S042081	135.00
36" x 100'	1 roll	S042082	195.00
44" x 100'	1 roll	S042083	235.00
60" x 100'	1 roll	S042134	320.00

Ultra Premium Photo Paper Luster



The cut-sheet version of Premium Luster Photo Paper (260) in sizes optimized for a variety of photographic applications and printers.

Uses:

Exceptional-quality color and black-and-white portraits and prints

Specs:

- Luster Finish
- 10 mil Thickness
- 97% Opacity
- 97 ISO Brightness

Paper Size	Sheets	Product #	Price
8.5" x 11"	50 sheets	S041405	\$ 38.99
8.5" x 11"	250 sheets	S041913	155.00
8.3" x 11.7"	250 sheets	S041602	170.00
11.7" x 16.5"	50 sheets	S041406	103.00
13" x 19"	50 sheets	S041407	128.00
13" x 19"	100 sheets	S041604	199.00
17" x 22"	25 sheets	S042084	75.95

Luster/Semigloss *continued*

Exhibition Fiber Paper



The true look and feel of a classic F-surface, air-dried print. Signature Worthy paper for stunning, long-lasting color and black-and-white prints.

Uses:

Neutral black-and-white prints with the look and feel of traditional darkroom fiber prints

Specs:

- Gloss Finish
- 12 mil Thickness (Rolls)
- 13 mil Thickness (Sheets)
- 111 ISO Brightness

Paper Size	Sheets/Rolls	Product #	Price
8.5" x 11"	25 sheets	S045033	\$ 39.00
13" x 19"	25 sheets	S045037	99.00
17" x 22"	25 sheets	S045039	149.00
24" x 30"	25 sheets	S045042	199.00
17" x 50'	1 roll	S045188	159.00
24" x 50'	1 roll	S045189	219.00
44" x 50'	1 roll	S045190	399.00
64" x 50'	1 roll	S045191	599.00

What you need to know about image permanence

How long will a photographic print last? There is no simple answer. But, it's important for those who care about photographs to have an understanding of the factors that affect print longevity so they can make informed decisions and take action to ensure their photographic prints last the expected time. Having a basic knowledge of industry-accepted comparative print permanence testing can help you make better decisions when buying imaging products. Just as importantly, it can help you spot potentially misleading marketing claims about photographic image quality and print permanence.

Several key factors affect print permanence.

Light, water, temperature, humidity and gaseous pollutants can all affect print permanence. And, while manufacturers usually provide print permanence ratings, not all manufacturers

use the same industry-accepted testing methods. To decide which products will give you the best print permanence, you need to be able to make an apples-to-apples comparison. Standardized testing by an independent third party using accepted industry practices can help you make informed decisions based on how different products perform relative to each other under the same conditions. Your work is too important to be subjected to undisclosed compromises involving longevity.



Luster/Semigloss *continued*

Premium Semigloss Photo Paper (170)



The same great performance, texture, and D-Max as Premium Semigloss Photo Paper (250), but in a more economical 7-mil thickness.

Uses:

Photographs and portraits up to 60" wide

Specs:

- Semigloss Finish
- 7 mil Thickness
- 90% Opacity
- 94 ISO Brightness

Paper Size	Rolls	Product #	Price
16.5" x 100'	1 roll	S042075	\$ 93.00
24" x 100'	1 roll	S041393	116.00
36" x 100'	1 roll	S041394	159.00
44" x 100'	1 roll	S041395	194.00

Premium Photo Paper Semigloss



The cut-sheet version of Premium Semigloss Photo Paper (250) in sizes optimized for a variety of photographic applications and printers.

Uses:

Photographs, promotional pieces, layouts, portfolio images, proofs, displays, posters and scenic color images

Specs:

- Semigloss Finish
- 10 mil Thickness
- 97% Opacity
- 93 ISO Brightness

Paper Size	Sheets	Product #	Price
4" x 6"	40 sheets	S041982	\$ 9.99
8.5" x 11"	20 sheets	S041331	14.99
13" x 19"	20 sheets	S041327	56.99
17" x 22"	25 sheets	S042124	75.95

What is a lightfastness rating?

A lightfastness or image permanence rating refers to the amount of time it takes for noticeable fading to occur in a print. The key to lightfastness lies in the combination of inks and paper. Third-party media and inks may not yield the

same lightfastness results as genuine EPSON media and inks. That's why, for the best longevity and quality, Epson recommends using genuine EPSON papers and inks instead of the third-party brands.

* Ink lightfastness ratings stated in this guide are based on the accelerated testing of prints on specialty media, displayed indoors under glass. Actual print stability will vary according to media, printed image, display conditions, light intensity, humidity and atmospheric conditions. Epson does not guarantee the longevity of prints. For maximum print life, display all prints under plexi, glass or lamination, or properly store them.

Glossy

Premium Glossy Photo Paper (250)



Our highest gloss, 10-mil, photographic paper with an extremely wide color gamut for vivid colors and rich, deep blacks.

Uses:

High-volume portraits, package and photograph printing

Specs:

- High-gloss Finish
- 10 mil Thickness
- 97% Opacity
- 92 ISO Brightness

Paper Size	Rolls	Product #	Price
16" x 100'	1 roll	S041742	\$ 99.95
24" x 100'	1 roll	S041638	135.00
36" x 100'	1 roll	S041639	195.00
44" x 100'	1 roll	S041640	235.00
60" x 100'	1 roll	S042132	320.00

Premium Glossy Photo Paper (170)



The same great performance, gloss and D-Max as Premium Glossy Photo Paper (250), but in a more economical, 7-mil thickness.

Uses:

Wall-sized portraits, photographs and posters

Specs:

- High-gloss Finish
- 7 mil Thickness
- 90% Opacity
- 94 ISO Brightness

Paper Size	Rolls	Product #	Price
16.5" x 100'	1 roll	S042076	\$ 93.00
24" x 100'	1 roll	S041390	116.00
36" x 100'	1 roll	S041391	159.00
44" x 100'	1 roll	S041392	194.00
60" x 100'	1 roll	S042136	260.00

Premium Photo Paper Glossy



Premium Photo Paper Glossy offers the same finish and features as Premium Glossy Photo Paper (250), but in convenient cut-sheet sizes.

Uses:

Photographs, promotional pieces, layouts, portfolio images, proofs, displays and posters

Specs:

- High-gloss Finish
- 10 mil Thickness
- 97% Opacity
- 92 ISO Brightness

Paper Size	Sheets	Product #	Price
4" x 6"	40 sheets	S041808	\$ 10.00
4" x 6"	100 sheets	S041727	17.99
8.5" x 11"	50 sheets	S041667	34.99
11" x 14"	20 sheets	S041466	29.99
11" x 17"	20 sheets	S041290	43.99
11.7" x 16.5"	20 sheets	S041288	44.99
13" x 19"	20 sheets	S041289	56.99
17" x 22"	25 sheets	S042092	75.95

Semimatte

Premium Semimatte Photo Paper (260)



With no surface texture, this premium quality, resin-coated, photographic paper exhibits an extremely low-sheen finish that minimizes glare, while maximizing color and density.

Uses:

Photographs, promotional pieces, layouts, portfolio images and proofs

Specs:

- Semimatte Finish
- 10 mil Thickness
- 96% Opacity
- 94 ISO Brightness

Paper Size	Rolls	Product #	Price
16" x 100'	1 roll	S042149	\$ 99.95
24" x 100'	1 roll	S042150	135.00
36" x 100'	1 roll	S042151	195.00
44" x 100'	1 roll	S042152	235.00



“EPSON media has helped me take my photography to an entirely new level.”

— Pete Turner, Professional Photographer

The perfect media for a master colorist.

Pete Turner's photographs are best known for their blazing hues, atmospheric effects, daring perspectives and surreal landscapes. In the past, he spent hours copying film to film to achieve the saturated color for which he is famous. Today, he simply uses an EPSON Stylus Pro printer and EPSON Ultra Premium Photo Paper Luster. "Its E-surface gives it a true photographic look, just like old black-and-white prints," he says. "It holds color exceptionally well. And, the luster finish gives it a feel that has a lot of snap to it. It makes a gorgeous print. I just love it."

See page 5 for Pete Turner's favorite media, EPSON Ultra Premium Photo Paper Luster.



© Pete Turner



EPSON coated matte media is perfect for presentation and display applications that require photographic image quality with a matte finish. These papers feature a soft, non-glare finish that produces photo-like prints with superior image quality, excellent color reproduction, outstanding contrast ratios and excellent highlight and shadow detail. Coated matte papers are available in a variety of thicknesses and weights, from lightweight papers for applications that require folding, to heavyweight papers and posterboard suitable for rigid, standalone displays.

Matte

Enhanced Matte Paper



An extremely bright white, heavyweight, matte-surface paper that yields saturated photographic images with an outstanding contrast ratio.

Uses:

Photographs and portraits that do not require gloss, reports and presentations

Specs:

- Matte Finish
- 10.3 mil Thickness
- 94% Opacity
- 104 ISO Brightness

Paper Size	Rolls	Product #	Price
17" x 100'	1 roll	S041725	\$ 59.95
24" x 100'	1 roll	S041595	79.00
36" x 100'	1 roll	S041596	119.00
44" x 100'	1 roll	S041597	149.00
64" x 100'	1 roll	S042135	191.00

Ultra Premium Presentation Paper Matte



The cut-sheet version of Enhanced Matte Paper in sizes optimized for a variety of photographic and graphic arts applications.

Uses:

Photographs and portraits that do not require gloss, reports and presentations

Specs:

- Matte Finish
- 10.3 mil Thickness
- 94% Opacity
- 104 ISO Brightness

Paper Size	Sheets	Product #	Price
8.5" x 11"	50 sheets	S041341	\$ 17.99
8.5" x 11"	250 sheets	S041914	72.95
8.3" x 11.7"	250 sheets	S041603	80.00
11.7" x 16.5"	50 sheets	S041343	45.99
13" x 19"	50 sheets	S041339	56.99
13" x 19"	100 sheets	S041605	90.00
17" x 22"	50 sheets	S041908	66.00

Enhanced Matte Posterboard



Perfect for indoor signage and displays, this standalone, bright white, matte-finish board offers incredible performance for both text and high-quality display graphics.

Uses:

Reports, presentations, short-term signage and displays

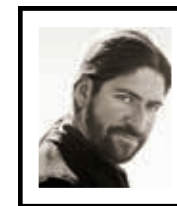
Specs:

- Flat Matte Finish
- 1.2 mm/47 mil Thickness
- 94% Opacity
- 104 ISO Brightness

Paper Size	Sheets	Product #	Price
24" x 30"	10 sheets	S041598	\$ 95.00
30" x 40"	5 sheets	S041599	95.00



Epson has set the standard for excellence in media. Partnering with many of the world's greatest paper manufacturers, they offer the widest range of substrates specially formulated to achieve optimum image quality and longevity with their ink sets.”



— John Paul Caponigro, Professional Photographer



© John Paul Caponigro

Refraction 1, 2002: "Photography offers an invitation to tune into the countless quiet moments of grace that surround us everyday — and preserve them. You've got to remain alert or you'll miss them. Catch them and they'll be with you forever."
— John Paul Caponigro

Matte *continued*

Doubleweight Matte Paper



An economical, all-purpose, high-quality, matte-finish paper in a durable thickness.

Uses:

Displays and posters

Specs:

- Matte Finish
- 8.3 mil Thickness
- 94% Opacity
- 84 ISO Brightness

Paper Size	Rolls	Product #	Price
24" x 82'	1 roll	S041385	\$ 60.00
36" x 82'	1 roll	S041386	80.00
44" x 82'	1 roll	S041387	99.00
64" x 82'	1 roll	S042138	145.00

Presentation Matte Paper



A bright white, general purpose, matte-finish paper offering quality and value.

Uses:

Courtroom graphics, indoor displays and posters

Specs:

- Matte Finish
- 7.5 mil Thickness
- 94% Opacity
- 86 ISO Brightness

Paper Size	Rolls	Product #	Price
24" x 82'	1 roll	S041295	\$ 52.00
36" x 82'	1 roll	S041221	70.00
44" x 82'	1 roll	S041220	92.00

General Purpose

Singleweight Matte Paper



A thinner version of Doubleweight Matte Paper providing quality and value in a paper that is ideal for folded or scored applications.

Uses:

Promotional pieces, comps, professional layouts, indoor signage, proofs, displays and posters

Specs:

- Matte Finish
- 5 mil Thickness
- 94% Opacity
- 90 ISO Brightness

Paper Size	Sheets/Rolls	Product #	Price
13" x 19"	100 sheets	S041909	\$ 51.95
17" x 22"	100 sheets	S041907	78.95
17" x 132'	1 roll	S041746	44.95
24" x 132'	1 roll	S041853	79.00
36" x 132'	1 roll	S041854	119.00
44" x 132'	1 roll	S041855	145.00

General Purpose *continued*

Presentation Paper Matte



A lighter weight, high-quality paper with a bright white, smooth surface, ideal for rich black text and vibrant, colorful graphics.

Uses:

Newsletters, flyers, reports and special presentations containing photos or graphics

Specs:

- Matte Finish
- 4.9 mil Thickness
- 90% Opacity
- 90 ISO Brightness

Paper Size	Sheets/Rolls	Product #	Price
8.3" x 11.7"	100 sheets	S041061	\$ 14.49
8.5" x 11"	100 sheets	S041062	14.99
8.5" x 14"	100 sheets	S041067	19.99
11" x 17"	100 sheets	S041070	34.99
13" x 19"	100 sheets	S041069	37.99
16.5" x 23.4"	30 sheets	S041079	23.99
16.5" x 49.21'	1 roll	S041102	33.99
17" x 22"	100 sheets	S041171	69.99

Display

Enhanced Adhesive Synthetic Paper



A bright white, flexible, polypropylene signage media with wet strength durability that delivers accurate color on an adhesive-backed, matte surface.

Uses:

Banners, indoor and outdoor signage

Specs:

- Textured Matte Finish
- 4.5 mil Thickness
- 93% Opacity
- 97 ISO Brightness

Paper Size	Rolls	Product #	Price
24" x 100'	1 roll	S041617	\$260.00
44" x 100'	1 roll	S041619	467.00



EPSON fine art papers deliver on print quality and longevity, the two most important factors when creating limited edition prints and fine art reproductions worthy of resale. Ideal for artists and printmakers, select EPSON Fine Art Papers have the same base as fine art papers that artists have used for centuries.

Smooth

Hot Press Bright



An acid-free, 100% cotton paper that ensures rich, deep blacks and an incredibly wide color gamut. The hot press processing of this media provides an extremely smooth finish for fine art printing.

Uses:

Original art, fine art reproductions and photography

Specs:

- 100% Cotton Fiber
- 18 mil Thickness (Sheets)
16 mil (Rolls)
- 98% Opacity
- 96 ISO Brightness

Paper Size	Sheets/Rolls	Product #	Price
8.5" x 11"	25 sheets	S042327	\$ 34.00
13" x 19"	25 sheets	S042330	94.00
17" x 22"	25 sheets	S042331	149.00
17" x 50'	1 roll	S042333	119.00
24" x 50'	1 roll	S042334	159.00
44" x 50'	1 roll	S042335	299.00
60" x 50'	1 roll	S042336	349.00

Hot Press Natural



An acid free, 100% cotton, hot press paper that provides an extremely smooth, natural finish. This fine art paper delivers rich, deep blacks and an incredibly wide color gamut.

Uses:

Original art, fine art reproductions and photography

Specs:

- 100% Cotton Fiber
- 18 mil Thickness (Sheets)
16 mil (Rolls)
- 98% Opacity
- 90 ISO Brightness

Paper Size	Sheets/Rolls	Product #	Price
8.5" x 11"	25 sheets	S042317	\$ 34.00
13" x 19"	25 sheets	S042320	94.00
17" x 22"	25 sheets	S042321	149.00
17" x 50'	1 roll	S042323	119.00
24" x 50'	1 roll	S042324	159.00
44" x 50'	1 roll	S042325	299.00
60" x 50'	1 roll	S042326	349.00

Cold Press Bright



An acid-free, 100% cotton, fine art paper that delivers rich, deep blacks and an incredibly wide color gamut. The cold press processing of this media provides an elegantly textured finish.

Textured

Uses:

Original art, fine art reproductions and photography

Specs:

- 100% Cotton Fiber
- 18 mil Thickness (Sheets)
19 mil (Rolls)
- 98% Opacity
- 96 ISO Brightness

Paper Size	Sheets/Rolls	Product #	Price
8.5" x 11"	25 sheets	S042307	\$ 34.00
13" x 19"	25 sheets	S042310	94.00
17" x 22"	25 sheets	S042311	159.00
17" x 50'	1 roll	S042313	119.00
24" x 50'	1 roll	S042314	159.00
44" x 50'	1 roll	S042315	299.00
60" x 50'	1 roll	S042316	349.00

Cold Press Natural



An acid-free, 100% cotton, cold press paper that provides an elegantly textured, natural finish. This fine art paper delivers rich, deep blacks and an incredibly wide color gamut for fine art applications.

Uses:

Original art, fine art reproductions and photography

Specs:

- 100% Cotton Fiber
- 21 mil Thickness (Sheets)
19 mil (Rolls)
- 98% Opacity
- 90 ISO Brightness

Paper Size	Sheets/Rolls	Product #	Price
8.5" x 11"	25 sheets	S042297	\$ 34.00
13" x 19"	25 sheets	S042300	94.00
17" x 22"	25 sheets	S042301	159.00
17" x 50'	1 roll	S042303	119.00
24" x 50'	1 roll	S042304	159.00
44" x 50'	1 roll	S042305	299.00
60" x 50'	1 roll	S042306	349.00

Watercolor Paper Radiant White



A high-quality, textured, matte-surface paper with the look and feel of a fine art display print.

Uses:

Fine art originals, reproductions and portraits

Specs:

- Textured Matte Finish
- 11.5 mil Thickness
- 96% Opacity
- 90 ISO Brightness

Paper Size	Sheets	Product #	Price
13" x 19"	20 sheets	S041351	\$ 27.99

Smooth

**UltraSmooth
Fine Art Paper 250 gsm**



A roll-format, 100% cotton, hot press, archival media that is acid-free, pH buffered, and designed for fine art quality and longevity.

Uses:

Original art, fine art reproductions, photographs, portraits and any application that requires the longest archival display life

Specs:

- Smooth Matte Finish
- 15 mil Thickness
- 98% Opacity
- 90 ISO Brightness

Paper Size	Rolls	Product #	Price
17" x 50"	1 roll	S041856	\$125.00
24" x 50"	1 roll	S041782	175.00
44" x 50"	1 roll	S041783	325.00
60" x 50"	1 roll	S042141	565.00

**UltraSmooth
Fine Art Paper 325 gsm**



The smaller, cut-sheet version of our 100% cotton, hot press, archival media that is acid-free, pH buffered, and designed for fine art quality and longevity.

Uses:

Versatile sizes for framable prints

Specs:

- Smooth Matte Finish
- 19 mil Thickness
- 98% Opacity
- 90 ISO Brightness

Paper Size	Sheets	Product #	Price
13" x 19"	25 sheets	S041896	\$119.00
17" x 22"	25 sheets	S041897	177.00

**UltraSmooth
Fine Art Paper 500 gsm**



Larger and more robust single sheets delivering the performance and museum-quality elegance of our 100% cotton, hot press, archival UltraSmooth Fine Art Paper.

Uses:

Wall-sized fine art reproductions, photographs and portraits up to 44" wide

Specs:

- Smooth Matte Finish
- 29 mil Thickness
- 98% Opacity
- 90 ISO Brightness

Paper Size	Sheets	Product #	Price
24" x 30"	20 sheets	SP91211	275.00
36" x 44"	10 sheets	SP91212	299.00



Cold Press Natural
See page 15.

Exhibition Canvas Matte
See page 19.

Exhibition Canvas Satin
See page 19.

Traditional fine art media goes digital.

EPSON Fine Art Media comes in a variety of textures and finishes so you can create many looks for your prints, from watercolor to oil painting. In fact, many EPSON Fine Art Papers have the same base as traditional fine art papers artists have used for centuries, but with a specially designed, ink-receptive layer that's optimized for digital printing. So, you can produce prints with the same appearance, feel and quality as paintings by the Old World Masters, right on your EPSON printer.

Exceptional archivability and durability.

Whether they're original art, fine art, art reproductions or limited-edition art, it's imperative that fine art prints be archival. And, that's where EPSON Fine Art Papers excel. Acids and lignin are found in wood pulp, which can cause prints to yellow and fade in a very short time. EPSON cotton-based papers are naturally acid- and lignin-free, so they resist yellowing and fading for generations — an important selling point for fine art buyers. Plus, they offer excellent smudge, scratch and water resistance.

Superior image quality and color reproduction.

EPSON Fine Art Media beautifully captures even the most intricate details and subtle textures of the original artwork. When used with EPSON inks, these papers offer an ultra wide color gamut for remarkably rich, accurate color. And, you'll enjoy that same image quality across all fine art paper sizes and types. With EPSON Fine Art Papers, you can offer customers fine art originals and reproductions that will last for generations. The remarkable image quality and color accuracy of your prints will satisfy even the most discriminating buyer.

EPSON exhibition-grade canvas.

In addition to fine art papers, Epson offers several fine art canvases to expand your creative options. These cotton and cotton-blend canvases feature a texture similar to that of oil paintings, and offer the highest image quality and archival display life. Plus, they're double-woven so they won't sag when stretched on a frame.



Velvet

Velvet Fine Art Paper



A very bright white, velvet-surfaced paper that is ideally suited for fine art photography. Vivid color reproduction and luxurious black density make this a favorite for photographic applications.

Uses:

Original art, fine art reproductions, photographs and portraits

Specs:

- Velvet Finish
- 19 mil Thickness
- 97% Opacity
- 94 ISO Brightness

Paper Size	Sheets	Product #	Price
8.5" x 11"	20 sheets	S041636	\$ 32.95
13" x 19"	20 sheets	S041637	69.95
17" x 22"	25 sheets	S042097	139.00

Somerset® Velvet for Epson 255 gsm



A high-performance, velvet surface, fine art paper for professional use. This is a 100% cotton rag, mould made paper, that is also acid-free and lignin-free.

Uses:

Original art, fine art reproductions, photographs and portraits

Specs:

- Velvet Finish
- 19 mil Thickness
- 95% Opacity
- 96 ISO Brightness
- Acid free

Paper Size	Rolls	Product #	Price
24" x 50'	1 roll	SP91203	169.00
44" x 50'	1 roll	SP91204	299.00

Somerset Velvet for Epson 505 gsm



A high-performance, velvet surface, fine art paper for professional use. This is a 100% cotton rag, mould made paper, that is also acid-free and lignin-free.

Uses:

Original art, fine art reproductions, photographs and portraits

Specs:

- Velvet Finish
- 36 mil Thickness
- 99% Opacity
- 96 ISO Brightness
- Acid free

Paper Size	Sheets	Product #	Price
24" x 30"	20 sheets	SP91200	299.00
36" x 44"	10 sheets	SP91201	335.00

Canvas

Exhibition Canvas Satin



A beautifully satin-finished poly/cotton blend canvas with a subtle, museum-quality texture and instant-drying performance. Easily stretchable for fine art reproduction and displays.

Uses:

Original art, fine art reproductions, photographs and portraits

Specs:

- Satin Finish
- 19 mil Thickness
- 99% Opacity
- 86 ISO Brightness

Paper Size	Rolls	Product #	Price
13" x 20'	1 roll	S045248	\$ 49.00
17" x 40'	1 roll	S045249	119.00
24" x 40'	1 roll	S045250	169.00
36" x 40'	1 roll	S045252	249.00
44" x 40'	1 roll	S045253	310.00
60" x 40'	1 roll	S045251	425.00

Exhibition Canvas Matte



A beautifully finished, poly/cotton blend, matte canvas with a subtle, museum-quality texture and instant-drying performance. Easily stretchable for fine art reproduction and displays.

Uses:

Original art, fine art reproductions, photographs and portraits

Specs:

- Matte Finish
- 19 mil Thickness
- 93% Opacity
- 86 ISO Brightness

Paper Size	Sheets/Rolls	Product #	Price
13" x 20'	1 roll	S045255	\$ 34.00
17" x 40'	1 roll	S045256	89.00
24" x 40'	1 roll	S045257	125.00
36" x 40'	1 roll	S045258	189.00
44" x 40'	1 roll	S045259	229.00
60" x 40'	1 roll	S045260	315.00
17" x 22"	25 sheets	S045261	145.00

Exhibition Canvas Gloss



A beautifully gloss-finished poly/cotton blend canvas with a subtle, museum-quality texture and instant-drying performance. Easily stretchable for fine art reproduction and displays.

Uses:

Original art, fine art reproductions, photographs, portraits

Specs:

- Gloss Finish
- 19 mil Thickness
- 93% Opacity
- 86 ISO Brightness

Paper Size	Rolls	Product #	Price
13" x 20'	1 roll	S045241	\$ 49.00
17" x 40'	1 roll	S045242	119.00
24" x 40'	1 roll	S045243	169.00
36" x 40'	1 roll	S045244	249.00
44" x 40'	1 roll	S045245	310.00
60" x 40'	1 roll	S045246	425.00

Canvas (Solvent)

GS Canvas Gloss (Solvent)



A quality gloss canvas designed to address the higher volume production applications of solvent inkjet printers.

Uses:

Fine art, decór

Specs:

- Gloss Finish
- 20 mil Thickness
- 414 gsm
- Poly/cotton blend

Paper Size	Rolls	Product #	Price
24" x 75'	1 roll	S045103	\$ 199.00
36" x 75'	1 roll	S045104	299.00
54" x 75'	1 roll	S045105	449.00
60" x 75'	1 roll	S045106	499.00

GS Canvas Satin (Solvent)



A quality gloss canvas designed to address the higher volume production applications of solvent inkjet printers.

Uses:

Fine art, decór

Specs:

- Satin Finish
- 20 mil Thickness
- 414 gsm
- Poly/cotton blend

Paper Size	Rolls	Product #	Price
30" x 75'	1 roll	S045316	\$ 249.00
54" x 75'	1 roll	S045317	449.00
60" x 75'	1 roll	S045318	499.00



EPSON professional proofing papers offer the perfect solution for color-critical, accurate proofing. Optimized for use with EPSON inks, they deliver superior color accuracy and stability for general proofing, imposition and contract proofing. To ensure color accuracy, EPSON Proofing Papers feature base colors that approximate those of the stock used in the actual printing process. And, when used with EPSON inks, they offer a wider color gamut, so you can reproduce more colors, more accurately.

Proofing Media

Standard Proofing Paper (205)



A 7.6-mil paper ideal for commercial and publication proofing applications. Engineered to the specifications of GRACoL Grade 1.

Uses:

GRACoL Grade 1 commercial and publication proofing applications

Specs:

- Semimatte Finish
- L* a* b* Value of 95.0, 0.0,-2.0
- 7.6 mil Thickness
- 96% Opacity
- 92 ISO Brightness

Paper Size	Rolls	Product #	Price
17" x 164'	1 roll	S045079	\$169.00
24" x 164'	1 roll	S045080	219.00
36" x 164'	1 roll	S045081	319.00
44" x 164'	1 roll	S045082	389.00

Standard Proofing Paper (240)



A 9-mil paper ideal for commercial and publication proofing applications. Engineered to the specifications of GRACoL Grade 1.

Uses:

GRACoL Grade 1 commercial and publication proofing applications

Specs:

- Semimatte Finish
- L* a* b* Value of 95.0, 0.0,-2.0
- 9 mil Thickness
- 93% Opacity
- 91 ISO Brightness

Paper Size	Sheets/Rolls	Product #	Price
17" x 100'	1 roll	S045111	\$109.00
24" x 100'	1 roll	S045112	159.00
36" x 100'	1 roll	S045113	229.00
44" x 100'	1 roll	S045114	279.00
13" x 19"	100 sheets	S045115	139.00

Proofing Media *continued*

Standard Proofing Paper SWOP3



A 9-mil paper ideal for commercial and publication proofing applications. Engineered to the specifications of SWOP Grade 3.

Uses:

SWOP Grade 3 commercial and publication proofing applications

Specs:

- Semimatte Finish
- L* a* b* Value of 93.0, 0.0, 0.0
- 9 mil Thickness
- 96% Opacity

Paper Size	Sheets/Rolls	Product #	Price
17" x 100'	1 roll	S045154	\$109.00
24" x 100'	1 roll	S045155	149.00
44" x 100'	1 roll	S045156	279.00
13" x 19"	100 sheets	S045157	149.00

Standard Proofing Paper Production



Engineered to the specifications of SWOP3, this value priced proofing paper exhibits exceptional whiteness with L* a* b* value of 96.0, 0.0, 0.0.

Uses:

Commercial and publication proofing applications

Specs:

- Semimatte Finish
- 8 mil Thickness
- L* a* b* Value of 96.0, 0.0, 0.0

Paper Size	Rolls	Product #	Price
17" x 100'	1 roll	S045313	\$74.00
24" x 100'	1 roll	S045314	104.00
44" x 100'	1 roll	S045315	189.00

Proofing Paper White Semimatte



A 10-mil, naturally white-base paper, free of optical brighteners and ideally suited for proofing a wide variety of color-critical commercial offset printing applications.

Uses:

Commercial and publication proofing applications

Specs:

- Semimatte Finish
- 10 mil Thickness
- 96% Opacity
- 90 ISO Brightness

Paper Size	Sheets/Rolls	Product #	Price
13" x 19"	100 sheets	S042118	\$128.00
13" x 100'	1 roll	S042002	79.00
17" x 100'	1 roll	S042003	96.00
24" x 100'	1 roll	S042004	135.00
36" x 100'	1 roll	S042005	203.00
44" x 100'	1 roll	S042006	248.00
60" x 100'	1 roll	S042140	335.00

Proofing Paper Commercial



A 7-mil, semimatte proofing paper ideally suited for simulating the commercial printing applications most commonly used in high-end, sheet-fed, printed products.

Uses:

Commercial and publication proofing applications

Specs:

- Semimatte Finish
- 7.1 mil Thickness
- 91% Opacity
- 89 ISO Brightness

Paper Size	Rolls	Product #	Price
13" x 100'	1 roll	S042144	\$ 79.00
17" x 100'	1 roll	S042145	96.00
24" x 100'	1 roll	S042146	135.00
36" x 100'	1 roll	S042147	203.00
44" x 100'	1 roll	S042148	248.00

Proofing Paper Publication



An 8-mil, matte finish paper free of optical brighteners and ideally suited for proofing a wide variety of color-critical publication printing applications.

Uses:

OB-free publication and commercial proofing applications

Specs:

- Semimatte Finish
- 8 mil Thickness
- 96% Opacity
- 74 ISO Brightness

Paper Size	Rolls	Product #	Price
13" x 100'	1 roll	S041996	\$ 75.00
17" x 100'	1 roll	S041997	90.50
24" x 100'	1 roll	S041998	129.00
36" x 100'	1 roll	S041999	192.00
44" x 100'	1 roll	S042001	234.00

Standard Proofing Paper Adhesive



A repositionable, adhesive backing with an EPSON Standard Proofing Paper base makes this semimatte paper the perfect solution for color-critical packaging and label applications.

Uses:

GRACoL Grade 1 packaging and label applications

Specs:

- Adhesive Backing, Repositionable
- L* a* b* Value of 95.0, 0.0, -2.0
- Semimatte Finish
- 10 mil Thickness
- 96% Opacity
- 92 ISO Brightness

Paper Size	Rolls	Product #	Price
24" x 100'	1 roll	S041548	\$179.00
36" x 100'	1 roll	S041549	259.00
44" x 100'	1 roll	S041550	469.00

Proofing Media *continued*

CrystalClear Film



An all new, clear film technology with unique ultra clear layering for the color-critical package proofing and prototype markets.

Uses:

Overlays, packaging, labels and progressives

Specs:

- Glossy Finish
- 4.5 mil Thickness
- 11% Opacity

Paper Size	Rolls	Product #	Price
17" x 100'	1 roll	S045151	\$179.00
24" x 100'	1 roll	S045152	239.00
44" x 100'	1 roll	S045153	439.00

CrystalClear Film Adhesive



An all new, clear film technology with unique ultra clear layering and a repositionable adhesive backing. This durable substrate is ideal for mockups for bottles and other irregular surfaces.

Uses:

Mockups for irregular surfaces

Specs:

- Glossy Finish
- 5 mil Thickness
- Repositionable

Paper Size	Rolls	Product #	Price
17" x 100'	1 roll	S045310	\$199.00
24" x 100'	1 roll	S045311	279.00
44" x 100'	1 roll	S045312	519.00

Proofing Media *continued*

Carolina Cover C1S 18 Point



A thick folding carton substrate for the instant production of color-critical prototypes and mockups.

Uses:

Prototypes and mockups

Specs:

- Semimatte Finish
- 18 Point Thickness (Sheet) / 10 Point (Roll)
- 99.8% Opacity
- 85 ISO Brightness
- L* a* b* Value of 95.0, 0.0, 0.0

Paper Size	Sheets/Rolls	Product #	Price
17" x 24"	50 sheets	S045167	\$995.00
24" x 36"	50 sheets	S045168	1,990.00
44" x 100'	1 roll	S045169	1,695.00

Tango Blanks C1S 18 Point



A thick folding carton substrate for the instant production of color-critical prototypes and mockups.

Uses:

Prototypes and mockups

Specs:

- Semimatte Finish
- 18 Point Thickness (Sheet) / 10 Point (Roll)
- 99.8% Opacity
- 84 ISO Brightness
- L* a* b* Value of 95.0, 0.0, 0.2

Paper Size	Sheets/Rolls	Product #	Price
17" x 24"	50 sheets	S045170	\$995.00
24" x 36"	50 sheets	S045171	1,990.00
44" x 100'	1 roll	S045172	1,695.00

Epson Professional Proofing Media – Standards and Industry Media Compatibility Matrix





EPSON film and synthetic papers create display signage that's as durable as it is beautiful. You get the same superior photographic image quality and color accuracy our other professional media provide, but in sizes and weights designed for the special requirements of advertising, banner and display applications. Optimized for use with EPSON inks, EPSON Signage Media delivers a wider color gamut for vibrant, accurate color; an impressive Dmax for excellent highlight and shadow detail; and superior fade resistance. Thanks to a microporous coating, all EPSON display media is instant-drying. Plus, it can be easily laminated for added durability.

Signage

DisplayTrans Backlight Media



Designed for creating backlit signage to be used in a lightbox for advertisements or displays, this opaque, polyester film provides for deep, rich blacks and incredibly vivid colors.

Uses:

Backlit signage

Specs:

- Matte Finish
- 7.5 mil Thickness
- 77% Opacity
- 95 ISO Brightness

Paper Size	Rolls	Product #	Price
24" x 100'	1 roll	S045116	\$179.00
36" x 100'	1 roll	S045117	269.00
44" x 100'	1 roll	S045118	329.00
60" x 100'	1 roll	S045119	449.00

Display

GS DisplayTrans Backlight Media (Solvent)



Designed for creating backlit signage to be used in a lightbox with solvent inks, our most durable backlight film is designed for advertisements or displays. This opaque, polyester film provides for deep, rich blacks and incredibly vivid colors.

Uses:

Banners, indoor and outdoor signage

Specs:

- Textured Matte Finish
- 4.5 mil Thickness
- 93% Opacity
- 97 ISO Brightness

Paper Size	Rolls	Product #	Price
30" x 100'	1 roll	S045339	\$319.00
54" x 100'	1 roll	S045340	579.00
60" x 100'	1 roll	S045341	639.00

Gloss

GS Poster Paper Gloss (Solvent)



High quality gloss paper designed for use with solvent inks. Rich color gamut and outstanding Dmax.

Uses:

Display signage, banners

Specs:

- Gloss Finish
- 8 mil Thickness
- 93 ISO Brightness

Paper Size	Rolls	Product #	Price
30" x 100'	1 roll	S045231	\$84.00
54" x 100'	1 roll	S045232	149.00
60" x 100"	1 roll	S045233	169.00



EPSON premium photo papers offer exceptional Dmax ratings to produce greater detail in dark and shadow areas for truly stunning photographs.

ICC profiles: Get the best from your EPSON printer.

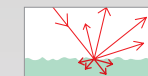
ICC profiles are custom files that adjust the color balance and amount of ink a printer's print driver lays down, based on the type of paper being used. Using the correct ICC profile is crucial for achieving consistent, accurate color. EPSON engineers have developed custom ICC profiles for many of our papers; these are available for free download at www.proimaging.epson.com

Get the finest photographic output.

The design and coating of inkjet papers have a tremendous effect on the look and feel of your print. Since the level of color that is visible to the human eye depends upon the reflected angle of light, the consistency and quality of the paper's inkjet receptive layer are of paramount importance.

Uncoated Paper

Uncoated papers have a rough surface that absorbs ink deeply. This causes light to be reflected away from the viewing eye at a wide range of angles (as indicated by the arrows), making images look blurred and muddy. Uncoated paper is not a good choice for photographic output.



Light is reflected away from the viewing eye.



Plain paper surface magnification.

Coated Paper

Coated papers feature an inkjet receptive layer that improves ink absorption and creates a smoother paper surface, so more light is reflected back to the viewing eye. They are an improvement over plain paper, but still do not offer the best photographic image quality.



More light is reflected back to the viewing eye.



Glossy paper surface magnification.

Resin-coated Paper

Resin-coated media, like EPSON Premium Photo Papers, have a thin sheet of plastic (resin) between the layers of the paper. This produces a smooth surface and prevents ink from being absorbed too deeply into the paper. The ink remains closer to the paper surface, so nearly all light is reflected back to the viewing eye. The result? Superior photographic prints with the look, color and feel of traditional photographs.



Nearly all light is reflected back to the viewing eye.



Resin-coated paper surface magnification.



Which paper is right for you?

Choosing the right paper comes down to matching the paper type to what you're printing.

Keep these guidelines in mind when selecting paper:

Finish: Glossy papers are perfect for photographs and full-color graphics. Matte papers feature a soft, non-glare finish that's great for formal portraits, black-and-white photos and brochures. Semigloss and luster papers have a satin finish that's excellent for portraits, wedding shots and scenic color images.

Thickness: The paper thickness you select should depend on your intended use. Choose thinner papers (4 to 9 mil) for everyday printing, internal comps and folding dummies. Use thicker papers (10 mil+) for photographs, flyers and brochures.

Opacity: Opacity is the lack of transparency that allows a sheet to conceal images on its reverse side. The higher the opacity, the less likely an image can be seen on the reverse side. Select a paper with an opacity of 90% or higher for photos and double-sided printing.

ISO Brightness: Brightness refers to the amount of light, for a specific wavelength, that a paper reflects. The more light a paper reflects, the higher the brightness. Brighter papers give more contrast for sharper images and more vibrant colors. Choose a paper with an ISO brightness rating of at least 84 for everyday printing. For photos, go with an ISO brightness of at least 90.

Dmax: Dmax is the measure of the maximum black that a paper and ink combination can produce and still show detail. The higher the Dmax, the greater the detail in dark and shadow areas. This is especially important for black-and-white photography. When used with EPSON inks, EPSON photo papers can produce a Dmax of up to 2.5.

L* a* b* Value: L* a* b* is a system created by the International Committee on Illumination (CIE) for describing, measuring and controlling color. It is most often used by prepress professionals to compare a press sheet to a contract proof for color accuracy.